

Oregon Fusion LLC

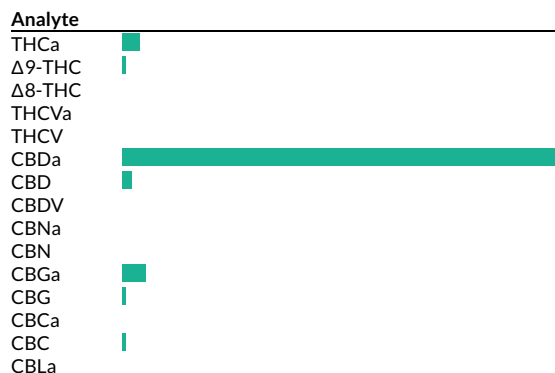
Sample: 1901CH0043.0189

Boring, OR 97009
adam@oregonfusioncbd.com
(914) 850-4645
Lic. #AG-R1040925IHG

Strain: Elektra
Batch#: ; Batch Size: - grams
Sample Received: 01/04/2019; Report Created: 01/08/2019; Expires: 01/08/2020
Harvest/Production Date:
Sampling: Random; Environment: Room Temp

OF-Elektra

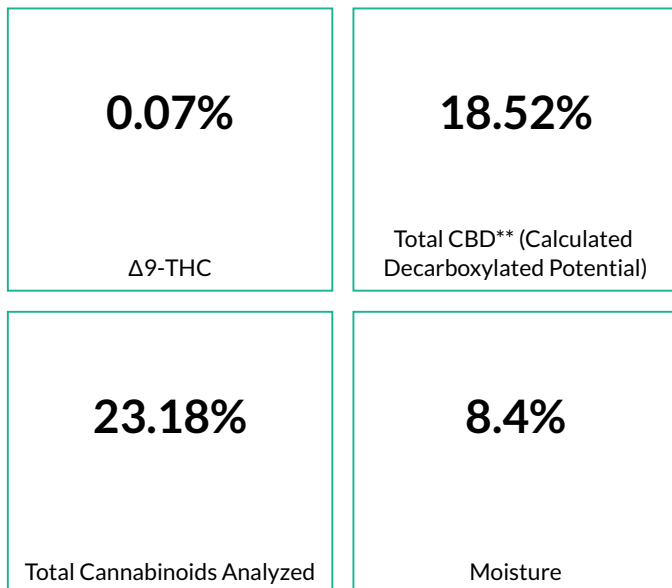
Plant, Flower - Cured, Outdoor
Harvest Process Lot: ; METRC Batch: ; METRC Sample:



Cannabinoids

321 HPLC3 20190105-1
01/05/2019

Pass



Analyte	LOQ mg/g	Mass %	Mass mg/g
THCa		0.79	7.9
Δ9-THC		0.07	0.7
Δ8-THC	<LOQ	<LOQ	<LOQ
THCVa	<LOQ	<LOQ	<LOQ
THCV	<LOQ	<LOQ	<LOQ
CBDa		206.65	206.5
CBD		0.41	4.1
CBDV	<LOQ	<LOQ	<LOQ
CBNa	<LOQ	<LOQ	<LOQ
CBN	<LOQ	<LOQ	<LOQ
CBGa		1.11	11.1
CBG		0.09	0.9
CBCa	<LOQ	<LOQ	<LOQ
CBC		0.06	0.6
CBLa	<LOQ	<LOQ	<LOQ
Total		23.18	231.8

*Total THC = THCa * 0.877 + d9-THC. **Total CBD = CBDa * 0.877 + CBD. LOQ = Limit of Quantification; NR = Not Reported; ND = Not Detected

Oregon Fusion LLC

Sample: 1901CH0043.0189

Boring, OR 97009
adam@oregonfusioncbd.com
(914) 850-4645
Lic. #AG-R1040925IHG

Strain: Elektra
Batch#: ; Batch Size: - grams
Sample Received: 01/04/2019; Report Created: 01/08/2019; Expires: 01/08/2020
Harvest/Production Date:
Sampling: Random; Environment: Room Temp

OF-Elektra

Plant, Flower - Cured, Outdoor
Harvest Process Lot: ; METRC Batch: ; METRC Sample:



Terpenes

409 GCFID1 20190107-1
01/07/2019

Analyte	Mass %	Mass mg/g	LOQ %	Analyte	Mass %	Mass mg/g	LOQ %
α-Pinene	0.02	0.2		Isoborneol	<LOQ	<LOQ	
Camphene	<LOQ	<LOQ		Borneol	<LOQ	<LOQ	
Sabinene	<LOQ	<LOQ		Hexahydro Thymol	<LOQ	<LOQ	
(-) -β-Pinene	0.03	0.3		α-Terpineol	0.03	0.3	
β-Myrcene	0.73	7.3	█	γ-Terpineol	<LOQ	<LOQ	
α-Phellandrene	<LOQ	<LOQ		Nerol	<LOQ	<LOQ	
δ-3-Carene	<LOQ	<LOQ		Pulegone	<LOQ	<LOQ	
α-Terpinene	<LOQ	<LOQ		Geraniol	<LOQ	<LOQ	
p-Isopropyltoluene	<LOQ	<LOQ		Farnesene	0.02	0.2	
δ-Limonene	0.10	1.0	█	α-Cedrene	<LOQ	<LOQ	
Eucalyptol	<LOQ	<LOQ		β-Caryophyllene	0.40	4.0	█
Ocimene 1	<LOQ	<LOQ		α-Humulene	0.16	1.6	█
Ocimene 2	0.09	0.9	█	Valencene	0.02	0.2	
γ-Terpinene	<LOQ	<LOQ		Geranyl Acetate	0.57	5.7	█
Sabinene Hydrate	<LOQ	<LOQ		cis-Nerolidol	<LOQ	<LOQ	
Fenchone	<LOQ	<LOQ		β-Nerolidol	0.11	1.1	█
Terpinolene	<LOQ	<LOQ		trans-Nerolidol	0.02	0.2	
Linalool	0.04	0.4		Caryophyllene Oxide	0.04	0.4	
Endo-Fenchyl Alcohol	0.02	0.2		(-) -Guaiol	0.06	0.6	█
Camphor	<LOQ	<LOQ		Cedrol	0.01	0.1	
(-) -Isopulegol	<LOQ	<LOQ		(-) -α-Bisabolol	0.19	1.9	█

Primary Aromas



Method: GC-FID; based on dry weight; LOQ = Limit of Quantification; NR = Not Reported; ND = Not Detected

Oregon Fusion LLC

Sample: 1901CH0043.0189

Boring, OR 97009
adam@oregonfusioncbd.com
(914) 850-4645
Lic. #AG-R1040925IHG

Strain: Elektra
Batch#: ; Batch Size: - grams
Sample Received: 01/04/2019; Report Created: 01/08/2019; Expires: 01/08/2020
Harvest/Production Date:
Sampling: Random; Environment: Room Temp

OF-Elektra

Plant, Flower - Cured, Outdoor
Harvest Process Lot: ; METRC Batch: ; METRC Sample:



Quality Control Data

Analytical Batch ID	QC Sample ID	Assay Name	QC Category Name
321 HPLC3 20190105-1	PMB01041901F	Cannabinoids	Blank

QC Notes

None

Compounds	Blank Result	Blank Max % (LOQ)	Blank Result %	Notes
THCa	0	0.05	<LOQ	-
Δ9-THC	0	0.05	<LOQ	-
CBDa	0	0.05	<LOQ	-
CBD	0	0.05	<LOQ	-



Oregon Fusion LLC

Sample: 1901CH0043.0189

Boring, OR 97009
adam@oregonfusioncbd.com
(914) 850-4645
Lic. #AG-R1040925IHG

Strain: Elektra
Batch#: ; Batch Size: - grams
Sample Received: 01/04/2019; Report Created: 01/08/2019; Expires: 01/08/2020
Harvest/Production Date:
Sampling: Random; Environment: Room Temp

OF-Elektra

Plant, Flower - Cured, Outdoor
Harvest Process Lot: ; METRC Batch: ; METRC Sample:



Quality Control Data

Analytical Batch ID	QC Sample ID	Assay Name	QC Category Name
321 HPLC3 20190105-1	PLCS01041901F	Cannabinoids	Lab Control Sample

QC Notes

None

Compounds	LCS Result (%)	LCS Spike	LCS % Rec	% Limits	Notes
THCa	4.55	4.45	102.25	70 - 130	-
Δ9-THC	3.55	3.47	102.31	70 - 130	-
CBDa	5.49	5.69	96.49	70 - 130	-
CBD	3.66	3.55	103.1	57 - 143	-



Oregon Fusion LLC

Sample: 1901CH0043.0189

Boring, OR 97009
adam@oregonfusioncbd.com
(914) 850-4645
Lic. #AG-R1040925IHG

Strain: Elektra
Batch#: ; Batch Size: - grams
Sample Received: 01/04/2019; Report Created: 01/08/2019; Expires: 01/08/2020
Harvest/Production Date:
Sampling: Random; Environment: Room Temp

OF-Elektra

Plant, Flower - Cured, Outdoor
Harvest Process Lot: ; METRC Batch: ; METRC Sample:



Quality Control Data

Analytical Batch ID	QC Sample ID	Assay Name	QC Category Name
321 HPLC3 20190105-1	PMS01041901F	Cannabinoids	Spike

QC Notes

None

Compounds	LOQ	Matrix Duplicate % RPD	Duplicate RPD Notes	Matrix Spike % Rec	% Limits	Notes
THCa	0.02	4.69	<20	329	70 - 130	Above Limit Range
Δ9-THC	0.02	0	<20	99	70 - 130	-
CBDa	0.02	0	<20	80	70 - 130	-
CBD	0.02	<LOQ	<LOQ	90	70 - 130	-

